

GBA SERIES

Ultra-High Purity Bar Stock Stainless Steel
Low-Flow Air-Actuated Bellows Valves



GBA SERIES

GBA Series Product Applications

This air-actuated stainless steel bellows valve series is intended for bulk gas distribution services where containment, cleanliness and purity are of the utmost importance.

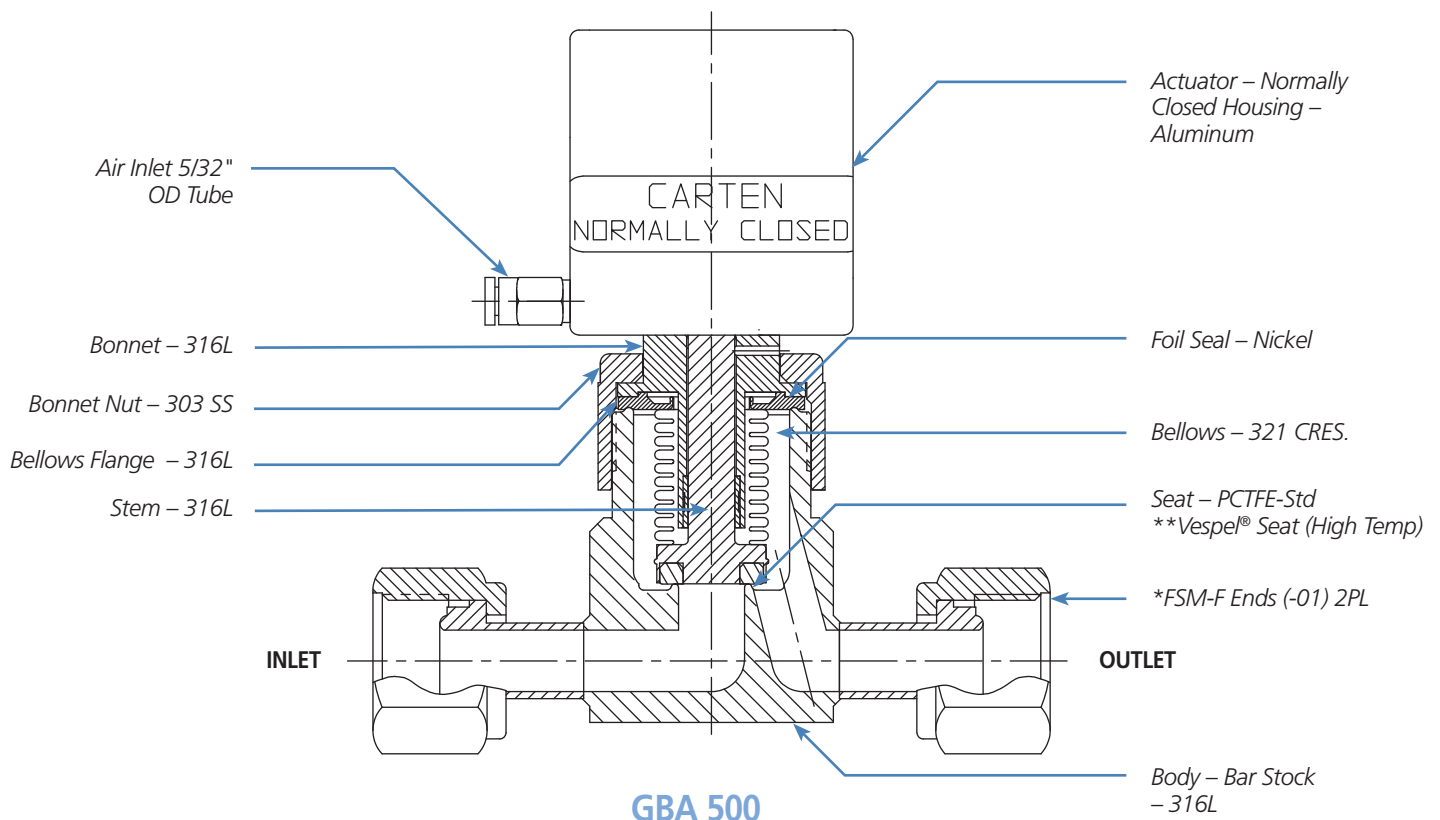
Primary applications include:

- Ultra-high purity gas service for the semi-conductor industry
- Ultra-high purity gas control for point of use or gas cabinets
- Superior containment and cleanliness for your most critical valve applications
- Suitability for inert and most toxic gases

GBA Series Product Features

- Actuated Bellows Valve, Compact Design, and Long Cycle Life
- Ultra-High Purity Bar Stock Stainless Steel/PCTFE Valve Construction
- 10 Ra Max – Electropolished Surface Finish – Std (Optional Surface Finishes Available)
- Valve Body and Tube Stubs are Serialized for Material Certification

GBA Construction Materials



*See Ordering Code for other available Valve Connection Ends.
**Vespel® is a registered trademarks of DuPont Company.

GBA SERIES

GBA Series Technical Data

MATERIAL OF CONSTRUCTION	Wetted Areas	316L Stainless Steel, PCTFE, Nickel, 321 SS				
	Non-Wetted Areas	316L Stainless Steel, Aluminum, 303 SS				
MAXIMUM OPERATING PRESSURE	GBA Series	Vacuum-250 psig (17.2 bar)				
MAXIMUM OPERATING TEMPERATURE	PCTFE Seat – Std	-22°F (-30°C) to 180°F (82°C)				
ACTUATION PRESSURE	GBA Series	60-75 psig (4.14 - 5.17 bar)				
GBA VALVES	BODY DATA	TECHNICAL DATA			WEIGHT	
Valve Sizes	Tube or VCR Ends / Body (Seat-Orifice) Sizes	(C _v)	Cycle Life Test >500,000 cycles @ 250 psi	LBS	(KG)	
GBA 500-01 VCR-F Ends	Ø.500 / .500 (Ø.437 in. (Ø11.1mm)-Orifice)	1.93		2.0	(0.91)	
GBA 500-02 VCR-M Ends	Ø.500 / .500 (Ø.437 in. (Ø11.1mm)-Orifice)	1.93		2.0	(0.91)	
GBA 500-03 Ø.375 T.E.	Ø.375 / .500 (Ø.437 in. (Ø11.1mm)-Orifice)	1.91		1.92	(0.87)	
GBA 500-04 Ø.500 T.E.	Ø.500 / .500 (Ø.437 in. (Ø11.1mm)-Orifice)	1.93		1.86	(0.84)	
GBA 500-05 VCR-M/F	Ø.500 / .500 (Ø.437 in. (Ø11.1mm)-Orifice)	1.93		2.0	(0.91)	
GBA 500-06 VCR-F/M	Ø.500 / .500 (Ø.437 in. (Ø11.1mm)-Orifice)	1.93		2.0	(0.91)	
GBA 500-07 Ø.500 T.E.	Ø.500 / .500 (Ø.437 in. (Ø11.1mm)-Orifice)	1.93		1.86	(0.84)	
HELIUM LEAK TEST	Inboard	≤ 1 x 10 ⁻⁹ std.cc (atm) He / sec				
	Across the Seat	≤ 1 x 10 ⁻⁹ std.cc (atm) He / sec				
	Outboard Pressure Test	≤ 1 x 10 ⁻⁶ std.cc (atm) He / sec				
CLEANLINESS AND PACKAGING	Assembled and tested in Class 100 Cleanroom. Purged and Final Packaged in Class 1 Cleanroom. Double-bag Packaging (2 mil nylon inner bag, 6 mil polyethylene outer bag) with Ultra-High Purity N ₂ gas environment.					
STANDARD FINISH	10 Ra Max – Electropolished Surface Finish – Std (Optional surface finishes available)					
NOTES AND OPTIONS	Testing: Particle, Moisture, O ₂ , SEM, ESCA, and AES Purge Connections – Valve Type/Location – Sizes .250 / .500 Valve Connection Ends – Inlet/Outlet Sizes .500/.750/1.000 Valve Body Mounting Holes Std. Options: 1) GBA 500 – 10-32 UNF-2B Valve Body Flanged Ends – Rotatable					

Specifications are subject to change without notice.

GBA SERIES



GBA Series Technical Dimensions

SERIES/DASH NO. (INCH)	A	B	C	D	E
GBA -01	0.99 (25.1mm)	3.60 (91.4mm)	0.53 (13.5mm)		
GBA-02	1.39 (35.3mm)	4.40 (111.8mm)	0.53 (13.5mm)		
GBA-03	Ø.375 (9.53mm)	0.035 (0.89mm)	0.53 (13.5mm)	0.99 (25.1mm)	3.60 (91.4mm)
GBA-04	Ø.500 (12.7mm)	0.049 (1.24mm)	0.53 (13.5mm)	0.50 (12.7mm)	2.62 (66.5mm)
GBA-05	1.39 (35.3mm)	0.99 (25.1mm)	0.53 (13.5mm)	4.00 (101.6mm)	
GBA-06	0.99 (25.1mm)	1.39 (35.3mm)	0.53 (13.5mm)	4.00 (101.6mm)	
GBA-07	Ø.500 (12.7mm)	0.049 (1.24mm)	0.53 (13.5mm)	3.04 (77.2mm)	7.70 (195.6mm)

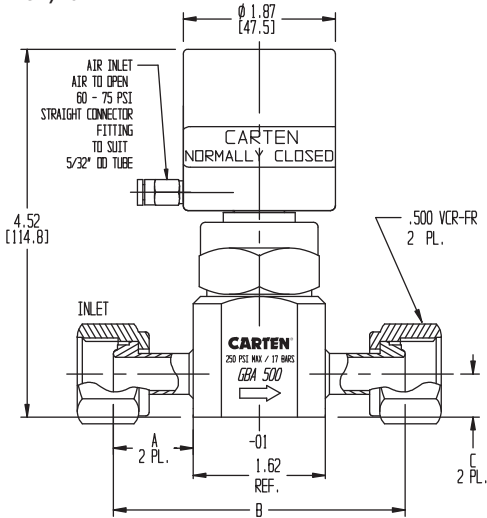
NOTE 1: All tolerances are ± 0.06 in. (± 1.52 mm) unless otherwise stated.

NOTE 2: Dimensional drawings shown are for reference only. Please contact CARTEN® for customer drawings.

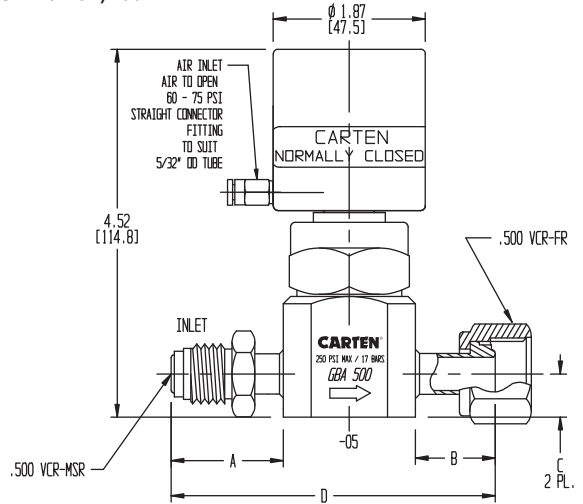
GBA SERIES

GBA Series Typical Valve Dimensions (3/8" / 1/2")

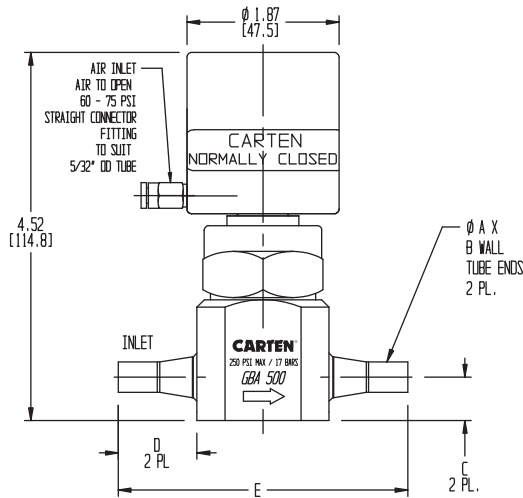
GBA 500 BODY
(VCR-FR) -01
(VCR-MSR) -02



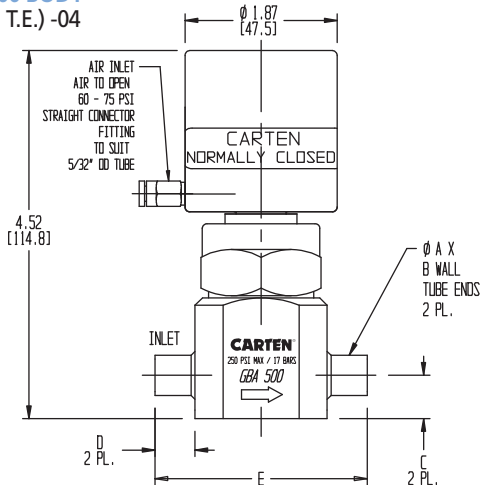
GBA 500 BODY
(VCR-MSR/FR) -05
(VCR-FR/MSR) -06



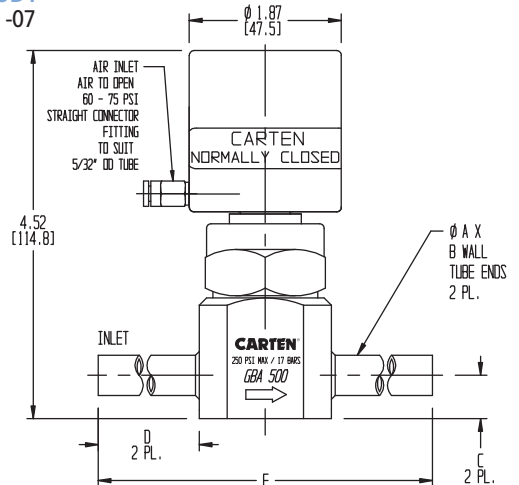
GBA 500 BODY
(Ø.375 T.E.) -03



GBA 500 BODY
(Ø.500 T.E.) -04



GBA 500 BODY
(Ø.500 T.E.) -07



GBA SERIES

GBA Series Ordering Code

GBA – **500** – **10** – **-01**

SERIES	TYPE
GBA	Pneumatic

CODE	SURFACE FINISH
10	10 Ra Max - Std EP
20	20 Ra Max - EP

VALVE SIZES	TUBE OR VCR ENDS (BODY) INCH – SIZES	
GBA 500	Ø.375	(.500)
GBA 500	Ø.500	
GBA 500	Ø.500 VCR-X	

CODE	OPTIONS
-01	VCR-FR / VCR-FR
-02	VCR-MSR / VCR-MSR
-03	Ø.375 TUBE ENDS
-04	Ø.500 TUBE ENDS-SHORT
-05	VCR-MSR / VCR-FR
-06	VCR-FR / VCR-MSR
-07	Ø.500 TUBE ENDS

Safe Product Selection

When selecting a product, the total system design must be considered to ensure safe, trouble-free performance. Function, material compatibility, adequate ratings, proper installation, operation, and maintenance are the responsibilities of the system designer and user.

Carten Fujikin, Inc.
604 West Johnson Avenue
Cheshire, Connecticut CT 06410 USA

Tel: +1 203-699-2100
Fax: +1 203-699-2179
Email: sales@cartenus.com
Website: www.cartenus.com

REV 10/2019

CARTEN®

High Performance Valves & Process Flow Solutions

Carten Controls, Ltd.
Unit 609, Waterford Industrial Park
Waterford, X91 AX05 Ireland

Tel: +353 (0)51 355436
Fax: +353 (0)51 378054
Email: sales@cartencontrols.com
Website: www.cartencontrols.com

Carten Controls is a member of Fujikin Corp Group (FCG) with Headquarters in Osaka, Japan.